



# V87 Series Ball Valves, DIN Standard

Pressure Rating up to 500 bar(7250 psig)

Catalog #: V87-2  
Oct. 2012



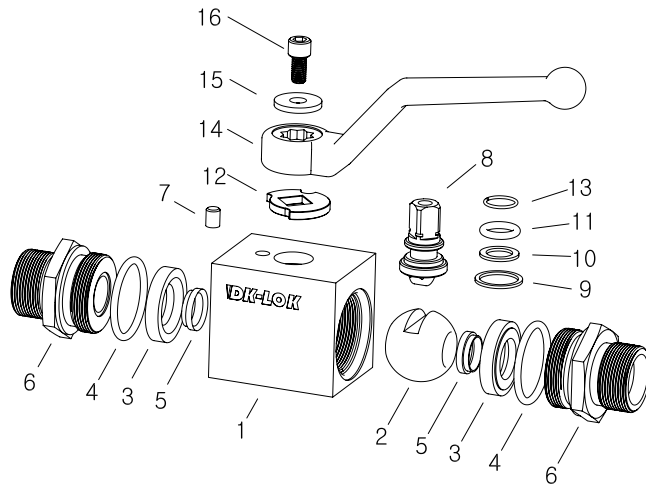
## Features

- Pressure Rating up to 500 bar (7,250 psi).
- Positive stop with robust stop pin.
- Various end ports including DIN Standard port.

## Applications

- Hydraulic fluids.
- Compressed Air
- Fuel oil system

## Material of Construction



No.	Component	Valve Body Material	
		DIN	ASTM
1	Body	DIN 1.4404	A276 SS316L
2	Ball	DIN 1.4404	A276 SS316L
3	Seat	POM	
4	o-ring	FKM	
5	Seat Guide	DIN 1.4404	A276 SS316L
6	Connector	DIN 1.4404	A276 SS316L
7	Pin	STAINLESS STEEL	
8	Stem	DIN 1.4404	A276 SS316L
9	Bearing	POM	
10	Stem ring	POM	
11	Stem o-ring	FKM	
12	Stopper	STAINLESS STEEL	
13	Snap ring	STAINLESS STEEL	
14	Handle	STAINLESS STEEL	
15	Washer	STAINLESS STEEL	
16	Screw	STAINLESS STEEL	

- Wetted parts and lubricants listed in blue.
- Fluorinated-based lubricant

## Factory Testing

Every valve is tested with nitrogen gas @ 1000 psig(68bar) for leakage at the seat to a maximum allowable leak rate of 0.1 SCCM. The stem packing is tested with nitrogen gas@1000 psig for no detectable leakages.

## Material of Construction

Rating based on valve with standard POM SEAT.

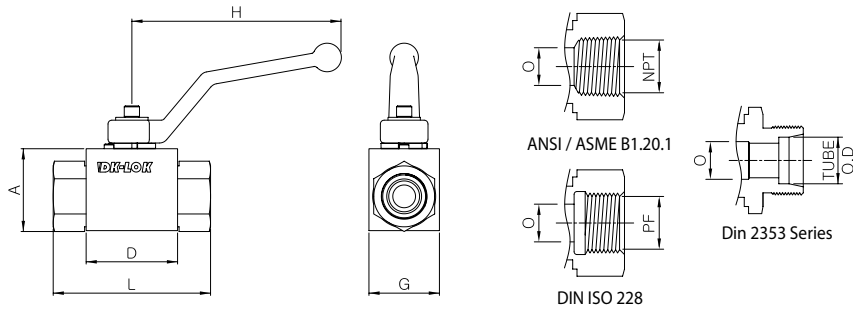
Valve Series	Seat	Temperature Rating ° C (°F)
V87A	POM	-30 to 100 (-22 to 212)
V87B		
V87C		
V87D	POM	-30 to 90 (-22 to 194)
	PTFE	-54 to 57 (-22 to 135)
V87E	POM	-30 to 85 (-22 to 185)
	PTFE	-54 to 52 (-65 to 126)

## Optional O-ring Materials

FKM O-Rings are standard. Add the designator to the ordering Number for valve with optional O-ring material.

O-ring Materials	Designator	Temperature Rating ° C (°F)
FKM	Nil	-23 ~ 190 (-10 ~ 375)
NBR	BN	-23 ~ 121 (-10 ~ 250)
EPDM	EP	-45 ~ 148 (-50 ~ 300)
FFKM	KZ	-30 ~ 210 (-22 ~ 410)





## Ordering Information and Table of Dimensions

Basic Ordering Number	End Connections	DN O	PN (bar)	Dimensions mm				
				A	G	D	L	H
V87A-	F2N	1/8 in. Female NPT	4	35	30	42	71	110
	F4N	1/4 in. Female NPT	6					
	F2G	1/8 in. Female PF	4					
	F4G	1/4 in. Female PF	6					
	N6L	6mm	6				76	
	N8L	8mm						
	N10L	10mm	8				93	
	N8S	8mm						
N10S	10mm	6						
N12S	12mm	8						
V87B-	F6N	3/8 in. Female NPT	10	40	35	44.4	73	110
	F6G	3/8 in. Female PF					79.5	
	N12L	12mm					82.5	
	N14S	14mm						
V87C-	F8N	1/2 in. Female NPT	13	43	37	48.4	83	110
	F8G	1/2 in. Female PF					87	
	N15L	15mm					89	
	N18L	18mm					93	
	N16S	16mm						
N20S	20mm							
V87D-	F12N	3/4 in. Female NPT	20	55	45	62.5	95	175
	F12G	3/4 in. Female PF					110	
	N22L	22mm					111	
	N25S	25mm						
V87E-	F16N	1 in. Female NPT	20	65	55	66.5	112	175
	F16G	1 in. Female PF					117	
	N28L	28mm					119	
	N35L	35mm	25				121	
	N42L	42mm					131	
	N30S	30mm						
N38S	38mm							

## Factory Testing

Select valve basic ordering number, applicable options, and body material.

V87A - F4N -

V87B - N12L -

V87D - N30S -

O-ring Material Designator	Seat Material Designator	Valve Body Material Designator
<ul style="list-style-type: none"> <li>● Nil : FKM</li> <li>● BN : NBR</li> <li>● EP : EPDM</li> <li>● KZ : FFKM</li> </ul>	<ul style="list-style-type: none"> <li>● PE : PTFE</li> <li>● Nil : POM</li> </ul>	<ul style="list-style-type: none"> <li>● S : 316 stainless steel</li> <li>● L : 316L stainless steel</li> </ul>

## Safe Valve Selection

The selection of a valve for any application or system design must be considered to ensure safe performance.

Valve function, valve rating, material compatibility, proper installation, operation and maintenance remain the sole responsibility of the system designer and the user. Dk Tech accepts no liability for any improper selection, installation, operation or maintenance.

**DK-LOK**<sup>®</sup>  
Fittings & Valves  
www.dklok.com

**DK Tech Corporation**  
Mailing Address  
1465, Seobu-ro, Juchon-Myeon, Gimhae-si,  
South Korea 621-841

DK TECH contact information  
Tel. (82) 55-338-0114  
Fax (82) 55-338-6745  
E-mail: sales@dklok.com

For International customers  
Tel. (82) 55-338-0031/2  
Fax (82) 55-338-6746  
E-mail: dklok@dklok.com